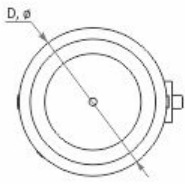
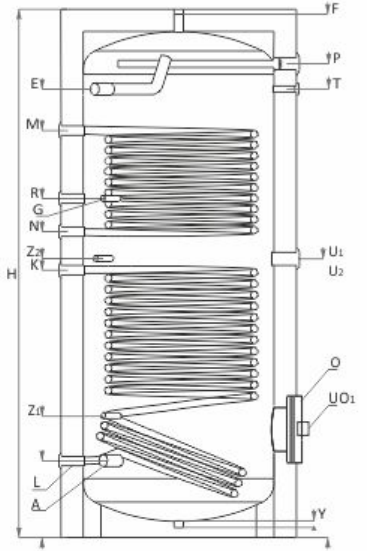
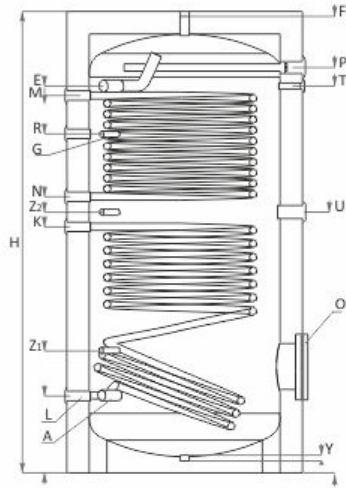
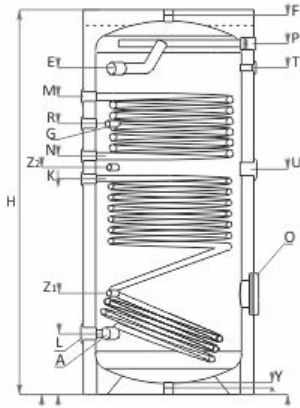
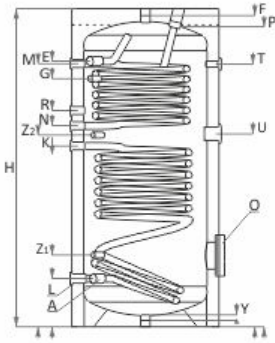


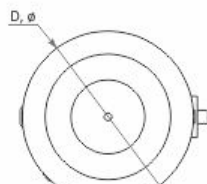


Technical characteristics:

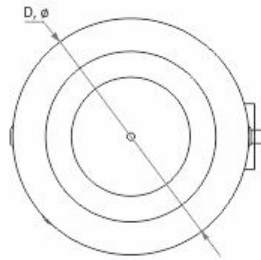
Vertical models:



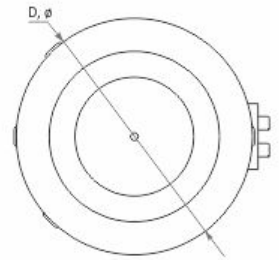
SON 300



SON 500



SON 1000



SON 1500

		SON 150	SON 200	SON 300	SON 400	SON 500	SON 750	SON 1000	SON 1500	SON 2000	
Capacity	L	150	200	300	400	500	750	1000	1500	2000	
Height H / Min. vertical clearance	mm	1070/1210	1340/1460	1420/1580	1470/1670	1720/1890	2000/2030	2050/2070	2310/2370	2310/2370	
Diameter D	mm	ø 560	ø 560	ø 660	ø 750	ø 750	ø 950	ø 1050	ø 1050	ø 1350	
Insulation		50 mm rigid PU			50 mm rigid PU		100 mm soft PU, removable				
Operating pressure / max. temperature	bar/°C	10/95	10/95	10/95	10/95	10/95	10/95	10/95	10/95	10/95	
Test pressure of tank	bar	15	15	15	15	15	15	15	15	15	
Lower S1 / Upper S2 Heat exch. coil	Heat exchange surface S1/S2	m ²	0.74/0.4	0.9/0.6	1.2/0.9	1.5/1	1.8/1.2	2.1/1.4	2.7/1.9	3/2.5	4.1/3
	Coil capacity S1/S2	L	4.56/2.47	5.55/3.70	7.40/5.55	9.25/6.17	11.10/7.40	12.95/8.63	16.65/11.72	18.50/15.42	25.28/18.50
	Prolonged power acc. to DIN 4708; 80/60/45 °C, S1/S2	kW m ³ /h	25/15 0.61/0.37	29/18 0.71/0.44	53/21 1.30/0.52	62/27 1.52/0.66	72/34 1.77/0.84	80/50 1.97/1.23	105/62 2.58/1.52	131/74 3.22/1.82	180/110 4.42/2.70
	NL – power coeff.at 60°C, S1/S2		2.5/1	4.5/1.5	11/2	13/2.2	18/2.8	32/10	42/28	64/34	80/55
	Pressure drop Δp, S1/S2	mbar	65/48	75/55	120/70	180/80	210/90	210/150	260/210	310/260	420/300
	Oper. pressure / max. coil temperature	bar/°C	16/110	16/110	16/110	16/110	16/110	16/110	16/110	16/110	16/110
	Test pressure of coil	bar	25	25	25	25	25	25	25	25	25
	Electric heater (optional)*	kW	3÷6	3÷6	3÷6	3÷7,5	3÷7,5	3÷7,5	3÷7,5	3x7.5	4x7.5
	Weight	kg	65	82	118	160	185	263	315	367	750
	Lower coil outlet S1	L, mm G1"	202	202	215	270	270	300	320	320	385
	Cold water inlet	A, mm	G1"/202	G1"/202	G1"/215	G1¼"/270	G1¼"/270	G1¼"/300	G1¼"/320	2xG1¼"/320	2xG1¼"/385
	Sensor sleeve for thermostat	G, mm G½"	788	1037	1104	1054	1206	1435	187	1487	1685
	Lower coil inlet S1	K, mm G1"	592	692	805	850	960	970	1080	1180	1635
Recirculation	R, mm	G¾"/788	G¾"/987	G¾"/957	G1"/1105	G1"/1206	G1"/1405	G1"/1487	G1"/1487	G1"/1265	
Upper coil outlet S2	N, mm G1"	674	812	894	952	1062	1160	1220	1350	1420	
Upper coil inlet S2	M, mm G1"	874	1112	1170	1210	1350	1560	1660	1790	1885	
Hot water outlet	E, mm	G1"/1070	G1"/1168	G1"/1182	G1¼"/1240	G1¼"/1453	G1¼"/1630	G1¼"/1700	2xG1¼"/1975	2xG1¼"/1885	
Air vent sleeve	F, mm G1"	1070	1340	1410	1480	1710	1950	2020	2320	2311	
Inspection opening	O ø mm	110/180 309	110/180 309	110/180 320	110/180 450	110/180 450	200/280 450	200/280 460	200/280 460	400/560 484	
Drain sleeve	Y, mm G1"	30	30	30	30	30	30	30	40	30	
Thermometer	T, mm G½"	892	1138	1170	1152	1453	1630	1700	2089	1835	
Anode protector	P, mm G1¼"	1070	1340	1410	1337	1568	1728	1798	2x2090	2x2003	
Sleeve for Electric heating element*: on water tank body on inspection opening flange	U, mm G1¼" UO, mm G1½"	645	752	852	901	1011	1040	1140 1x	2x1220 1x	2x1340 2x	
Additional sensor sleeve	Z, mm G½"	352	302	320	450	450	535	520	520	745	
		631	752	852	901	1011	1040	1140	1230	1340	

*Electric heating element mounting option: on inspection opening flange